

1930's Detailed Yardage for 12" Blocks

This kit was designed to give you options. Remember there are 16 blocks included in this block party. We suggest that you wait to cut your fabric because you may want to switch out blocks. Feed Sack prints from the 30s always play well together. If you want more variation in your quilt, add other fat quarter from your stash. This detailed cutting chart is only a suggestion, this quilt is your own. Have fun and make it unique!

To keep things simple Teresa decided to work with Fat Quarters (FQ). She created an easy to follow number system. You can follow the suggested numbering system or create your own by swapping out your least favorite colors. Notice Teresa used two red FQs to compliment her log cabin blocks.

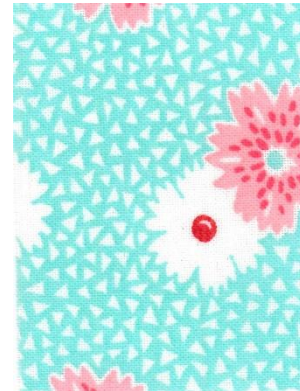
Color 1 and 2

Christmas Star	(1) 6" square
Flying Geese	(1) 5 ½" square
Cups and Saucers	(1) 5 ½" square
Memory Wreath	(2) 4 ½" square
Christmas Star	(1) 4 ½" square
Bear's Paw	(4) 4" square
Memory Wreath	(1) 3 ½" x 7"
Silent Star	(1) 5 ½" square
To Market To Market	(1) 4 ½" square
To Market To Market	(1) 4" x 8"
Eleanor Star	(1) 7 1/4 "



Color 3

- Friendship (1) 7" square
- Friendship (1) 5" square
- Independence Square (1) 3 1/8" x 14"
- Grandma's Star (2) 3" x 6"
- Grandma's Star (3) 2 1/2" x 6"



Color 4

- Friendship (1) 7" square
- Friendship (1) 5" square
- Memory Wreath (2) 4 1/2" squares
- Memory Wreath (1) 3 1/2" x 7"
- Christmas Star (4) 3 1/2" squares
- Independence Square (1) 1 7/8" x 19"
- Independence Square (1) 1 7/8" x 9"
- Independence Square (2) 1 7/8" x 5"
- Independence Square (1) 1 7/8" square



Color 5

- Friendship (1) 7" square
- Friendship (1) 5" square
- Independence Square (1) 3 1/8" x 14"
- Grandma's Star (2) 3" x 6"
- Grandma's Star (3) 2 1/2" x 6"



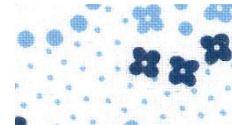
Color 6

Christmas Star	(1) 5 ½" square
Cups and Saucers	(1) 5 ½" square
Cups and Saucers	(1) 4 ½" square
Memory Wreath	(2) 4 ½" squares
Kentucky Chain	(2) 2 ¾" x 9 ½"
Kentucky Chain	(2) 2 ¾" x 4"
Christmas Star	(1) 1 7/8" x 8 ½"
To Market To Market	(1) 4 3/4"
Eleanor Star	(2) 3 7/8"



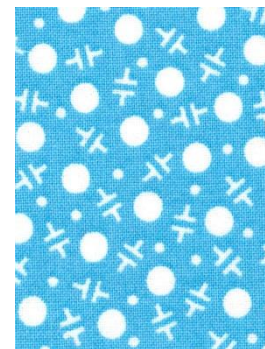
Color 7

End of Day	(4) 2 1/4" x 20"
Silent Star	(1) 5 1/2" square



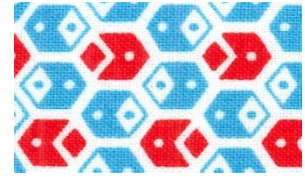
Color 8

Bear's Paw	(2) 6" squares
Cups and Saucers	(1) 5" x 10"
Dora's Delight	(1) 5" x 10"
Dora's Delight	(1) 3 ¼" square
Eleanor Star	(4) 2 1/4" x 5"
Eleanor Star	(2) 3 /14" square



Color 9

Flying Geese	(2) 5 ½" squares
Memory Wreath	(1) 4 ¾" square
Dora's Delight	(4) 3" x 6"
Silent Star	(2) 5 1/2" squares
Eleanor Star	(1) 3 1/2" square



Color 10

Liberty Star	(2) 1 3/8 " x 21"
Flying Geese	(1) 5 ½" square
Kentucky Chain	(2) 2 ¾" x 9 ½"
Kentucky Chain	(4) 2 ¾" x 4"
Bear's Paw	(1) 2" square
To Market To Market	(1) 4" x 8"



Color 11

Silent Star	(1) 5" x 10"
To Market To Market	(1) 4 ½ "
To Market To Market	(1) 4" x 8"



Color 12

- Cups and Saucers (2) 7" squares
- Flying Geese (1) 7" square
- Double T (2) 4 ½" squares
- Dora's Delight (2) 3 ½" square
- Flying Geese (1) 2 ½" square



Color 13

- Liberty Star (2) 1 3/8" x 21"
- Friendship (1) 7" square
- Friendship (1) 5" square



Color 14

- End of Day (8) 2 1/4" x 20"



Dark Side of Log Cabin (Gradate logs from lightest to darkest)

- Center (2) 2 ½" strips
- Dark 1 and 2 (7) 1 ¾" strips
- Dark 3 and 4 (11) 1/¾" strips
- Dark 5 and 6 (14) 1 ¾" strips
- Dark 7 and 8 (20) 1 ¾" strips



Binding (2) 16" strips cut into
2 ¼" strips on the bias

Background 6 ½ yds

Log Cabin (B1-B8) (42) 1 ¾" strips

Border (9) 10 ½" strips

(2) 7 ¼ " strips cut into

Eleanor Star (1) 7 ¼ " square

Cups and Saucers (1) 7" square

Christmas Star (1) 7" square

Flying Geese (3) 7" squares

Liberty Star (1) 6 ¾" square

(2) 6" strip cut into

Christmas Star (1) 6" squares

Grandma's Star (4) 6" x 2 ½"

Bear's Paw (2) 6" squares

Friendship (4) 5 ½" squares

Silent Star (2) 5 1/2" squares

Cups and Saucers (1) 5" x 10"

(3) 5" strip cut into

Dora's Delight	(1) 5" x 15"
Dora's Delight	(1) 5" x 10"
Grandma's Star	(1) 5" x 16"
Silent Star	(2) 5 ½" squares
Friendship	(4) 5" squares
Kentucky Chain	(4) 4 ¼" squares
Christmas Star	(8) 2 1/2" squares

(1) 4 3/8" strip cut into

Liberty Star	(4) 4 3/8" squares
Memory Wreath	(2) 4 3/8" squares
To Market To Market	(1) 4" x 8 "

(2) 3 ½" strip cut into

Christmas Star	(1) 3 ½" x 8 ½ "
To Market to Market	(4) 3 ½" squares
Eleanor Star	(4) 3 ½" squares
Memory Wreath	(4) 3 ½" squares
Independence Square	(1) 3 ¼ " x 9"

(3) 2 ¼ " strips

End of Day	(4) 2 ¼ " x 20"
Bear's Paw	(4) 2 ¼" squares
Bear's Paw	(4) 2" x 5 ¾"

(1) 1 7/8" strips cut into

Independence Square	(1) 1 7/8" x 19"
Independence Square	(1) 1 7/8" x 14"
Independence Square	(1) 1 7/8" x 5"
Independence Square	(2) 1 7/8" squares

(2) 1 3/4" strips

Flying Geese (Framing Border)

(1) 1 3/8" strip cut into

Liberty Star	(2) 1 3/8" x 21"
--------------	------------------